

Tuba 2

Bass clef in Bb

Continental Divide

for wind band

Stig Nordhagen

$\text{♩} = 56$

3 2 1

mf *accel.* *mp*

10

mf $\text{♩} = 112$ *f* *mp*

17

ffp *f* *mf* *f* *ff*

25

30

ff *mp* *ff* *ff*

35 4

rit. 2

42 $\text{♩} = 136$ 7 5 *mp* *f* *p*

53 tenuto 6 *sfz* *mp*

58 *f* *mf*

62

f *sf*

66 2 7 3

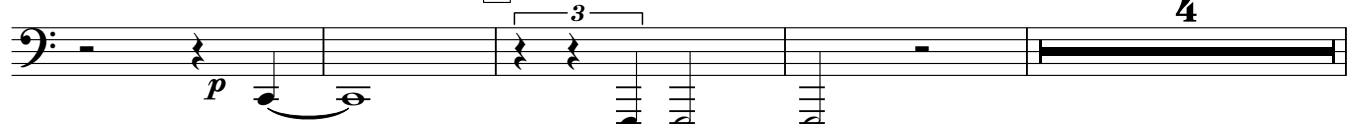
-Continental Divide-

2

Tuba 2

72

8

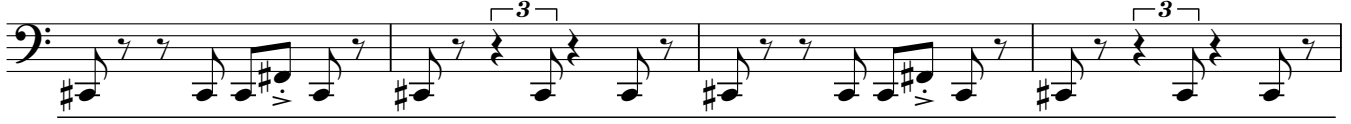


80

9

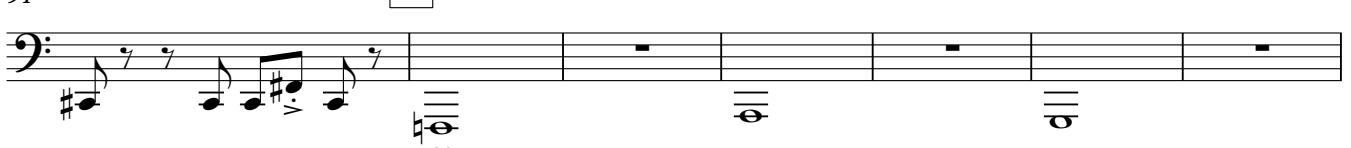


87



91

10

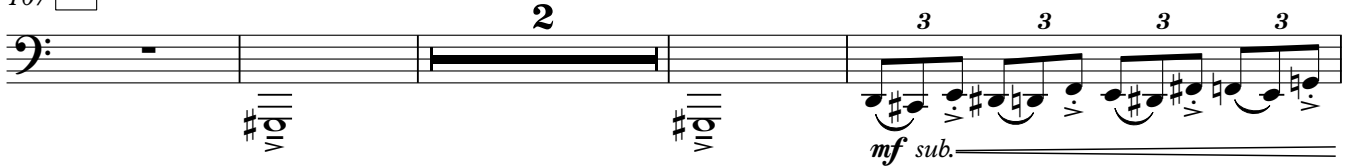


98



107

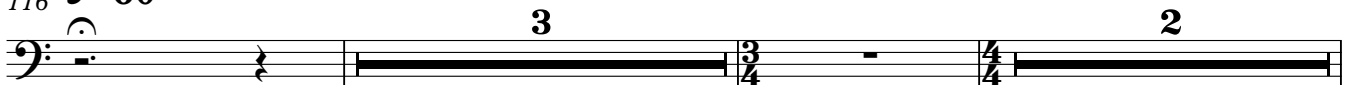
11



113

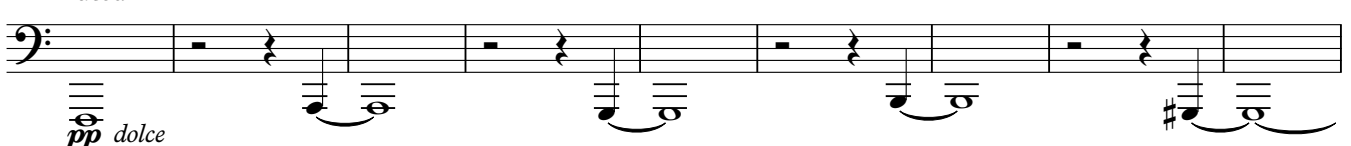


116 $\text{♩} = 60$



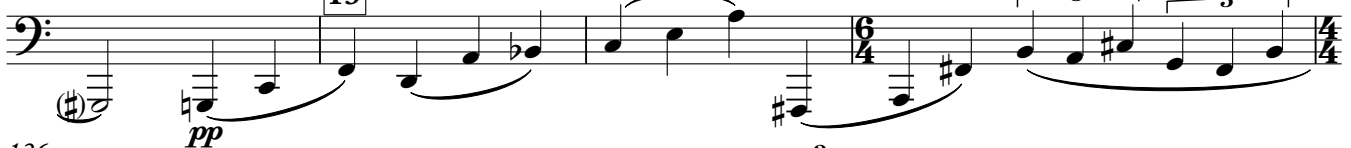
12

123 muted



132

13



136



-Continental Divide-

Tuba 2

3

140 **accel.** **open**

145 **♩=82** **Press forward**

146 **14** **rall.**

151 **♩=60** **muted**

160 **3** **15** **5** **3**

172 **16** **3** **p** **mf > p**

179 **17** **2** **11** **5**

-Continental Divide-

4

Tuba 2

199

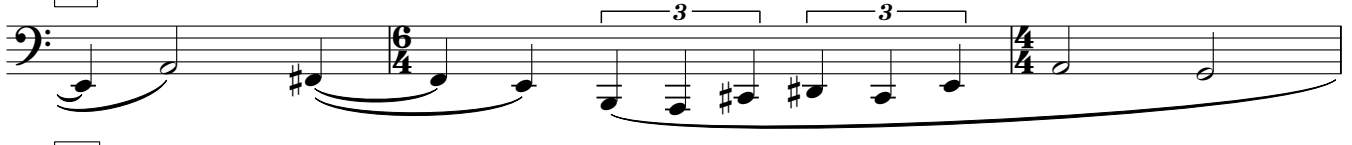
18



205

19

mf. p poco á poco cresc.



208

20

poco accel.



212

$\text{♩} = 69$ $\text{♩} = 138$

21



219

22



226



231

23



235



241

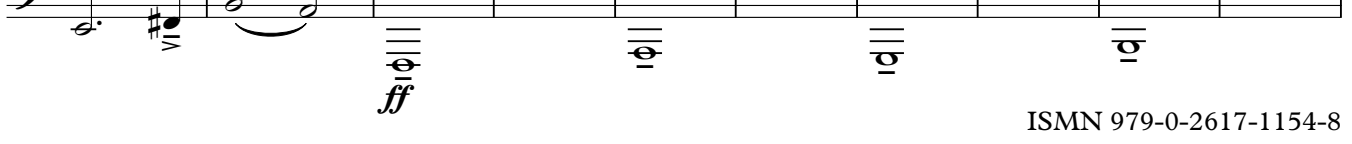


249



256

24



266 25 Bsn.2 3

277 26 6 27

287

293 28 7 29 3

306 30 senza rit. $\text{♩} = 68$

316

320 rall.

325 $\text{♩} = 146$ 3

-Continental Divide-

6

Tuba 2

328



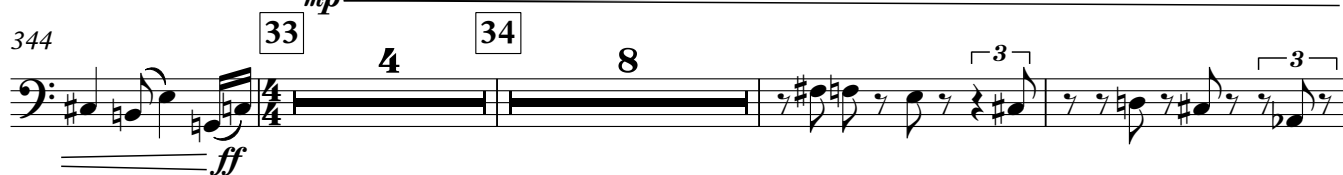
333 [31]



337 [32]



344



359



363



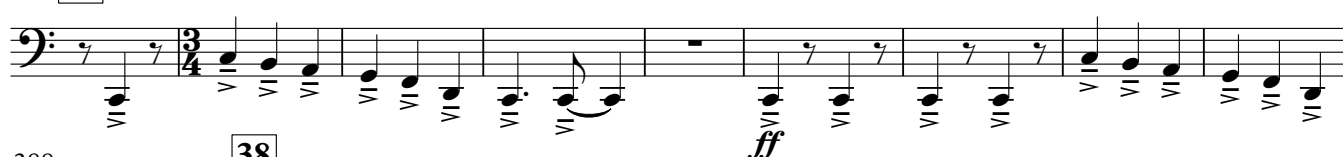
367



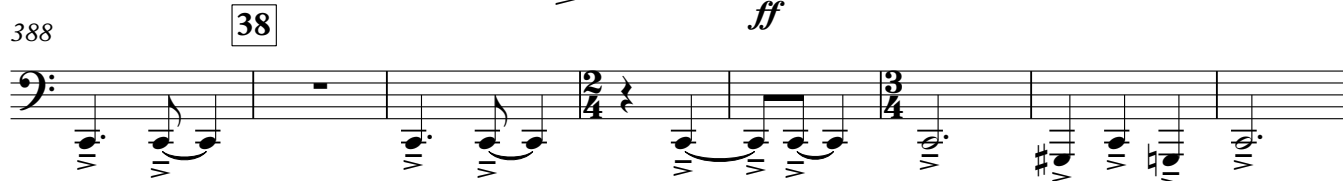
371 ♩=152(sub)



379 [37]



388



396

