

## PLAY (warm-ups)

## I Melody

HANS OFFERDAL

Adagio  $\text{♩} = 76$ *Espressione*

2

9

13

17

24

25

rit.

*mf*

*mp*

*p*

*pp*

*f*

## II Another Melody

Adagio  $\text{♩} = 72$ *Maestoso*

5

8

9

*mf*

*mp*

*mf*

*f*

*p*

## III Harmony

Andante  $\text{♩} = 84$ *Affettuoso*

7

8

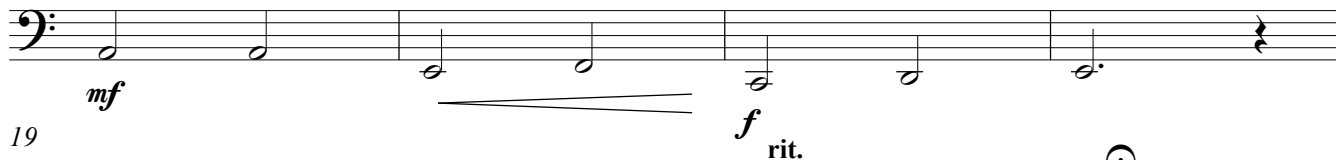
*mf*

*p*

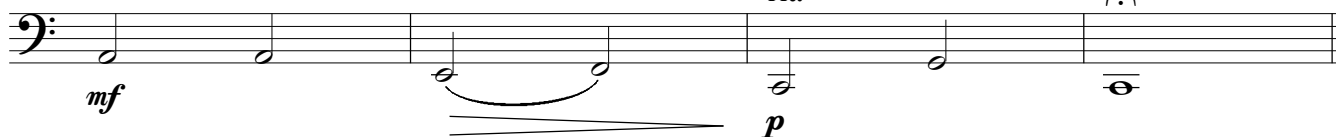


PLAY  
Tuba in B $\flat$

15 **15**



19



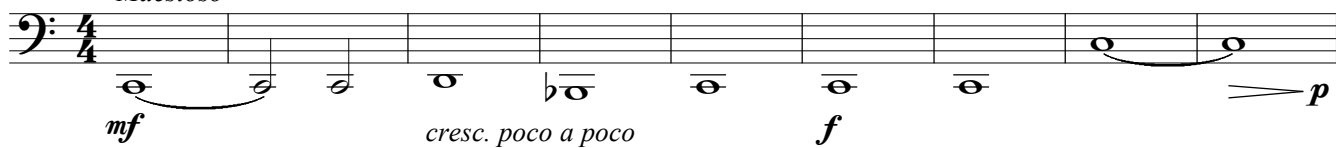
## IV Another Kind of Harmony

Adagio  $\text{♩} = 69$

*Maestoso*

poco rit.

a tempo poco rit.

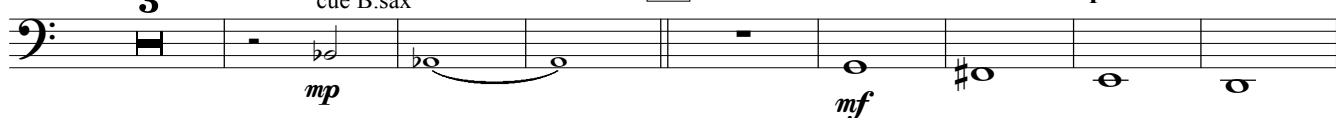


10 **10** a tempo  
3

cue B.sax

**16**

poco rit.



21 **21** a tempo

poco rit.

a tempo rit.



## V Almost Like a Canon

Moderato  $\text{♩} = 120$

4

*Giocoso*



11 **11** solo

tutti



18



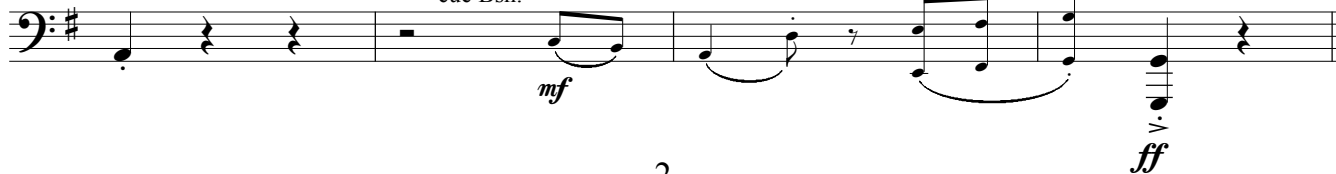
22

cue Bsn.

solo

molto rit.

tutti



## VI More Like a Canon

Andante ♩ = 80  
*Maestoso*

Two staves of music in bass clef, 4/4 time, key of B♭. The first staff begins with a *mf* dynamic and a slur over the first six measures, followed by a *f* dynamic. The second staff begins with a *f* dynamic and a slur over the first four measures, followed by a *mf* dynamic. Measure numbers 7 and 11 are indicated at the start of the second staff.

## VII Choral in F-major

Adagio ♩ = 60 - 66  
*Espressione*

Four staves of music in bass clef, 4/4 time, key of F major. The first staff begins with a *mf* dynamic and a slur over the first four measures, followed by a *f* dynamic. The second staff begins with a *mp* dynamic and a slur over the first four measures, followed by a *f* dynamic. The third staff begins with a *mf* dynamic and a slur over the first four measures, followed by a *f* dynamic. The fourth staff begins with a *f* dynamic and a slur over the first four measures, followed by a *mf* dynamic. Measure numbers 7, 11, 13, and 19 are indicated at the start of the second, third, and fourth staves respectively. Performance markings include *poco rit.*, *a tempo*, *rit.*, *a tempo*, *poco rit.*, and *molto rit.*