

B^b-Bass Trombone

Flåklypa-Medley

Bent Fabricius Bjerre/
Arr.: Lars Erik Gudim

Ballad (♩ = 96)

8 3

A

p *mp*

16

B **C** **D**

7 8 8

March (♩ = 112)

41

E

mf

Med.up Swing (♩ = 164)

47

F **G** **H**

6 8 8

March (♩ = 128)

73

I **J** **K** **L** **M** **N**

8 8 8 8 16

f *f*

122

127

133

Fast Swing (♩ = 128)

O **P**

3 16 18

173

Q

4

f

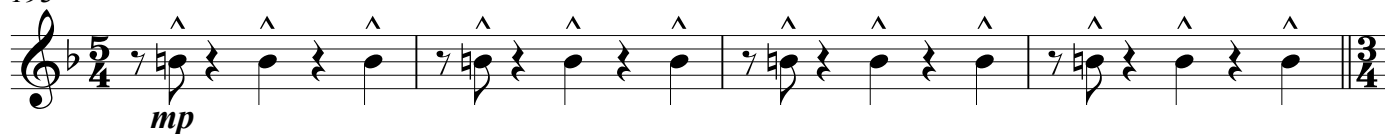
181

R

8

Waltz (♩ = 208)

193



197

S

T

8



213

U



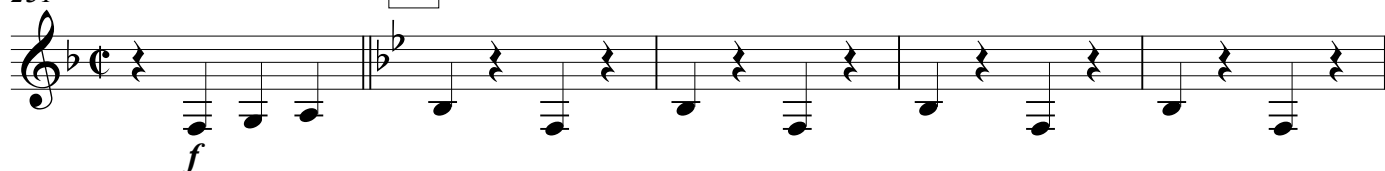
221

V

Fast Swing ($\text{♩} = 128$)

231

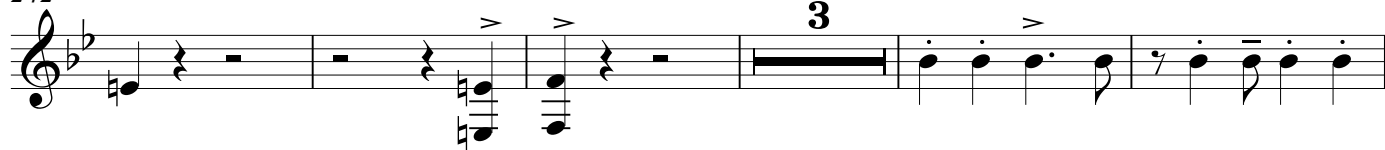
W



236



242



250

