

Visen om Vesle Hoa

Tuba in E \flat (BC)

Thorbjørn Egner
arr: Reid Gilje

Tempo $\text{♩} = 116$

f

6

A

12

18 Cue for String Bass

B

25

C

32 Cue for String Bass

39

D

46 *f*

E

53 *mf*

Visen om Vesle Hoa - Tuba in E \flat (BC) - 2

59

65

71

78

85

92

99

105

112

119

F

G

Cue for String Bass

H

I

J

K

L

Cue for String Bass

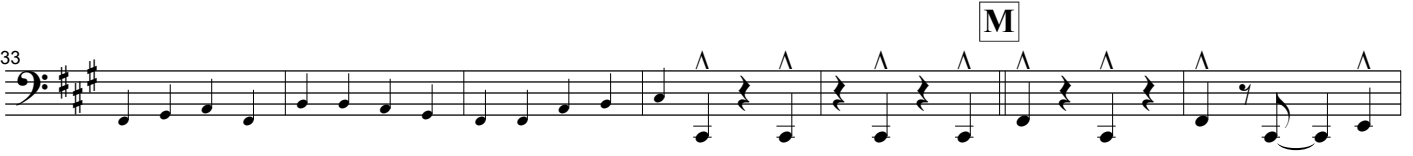
Detailed description of the musical score: The score is for a Tuba part in E-flat major (one sharp, F#). It consists of nine staves of music, numbered 59 to 119. The notation is in bass clef. The first staff (59-64) features a rhythmic pattern of eighth notes with accents (^) and slurs. The second staff (65-70) continues this pattern. The third staff (71-77) includes a 'Cue for String Bass' instruction and a double bar line. The fourth staff (78-84) continues the melody. The fifth staff (85-91) features a 'Cue for String Bass' instruction and a double bar line. The sixth staff (92-98) continues the melody. The seventh staff (99-104) continues the melody. The eighth staff (105-111) includes a 'Cue for String Bass' instruction and a double bar line. The ninth staff (112-118) continues the melody. The final staff (119) includes a 'Cue for String Bass' instruction and a double bar line. Chord symbols F, G, H, I, J, K, and L are placed above the staff at measures 65, 71, 85, 92, 105, 112, and 119 respectively. Dynamic markings include accents (^) and slurs.

Visen om Vesle Hoa - Tuba in E \flat (BC) - 3

126



133



140

