

In-line chemical seal RD 60

Part no. 31380W

In-line chemical seals for hygienic processes



benefits

- for clamp connection ISO 2852
- no T piece required in pipe
- easy, fast installation in pipe

Application

For use with Bourdon tube pressure gauges, pressure transducers or pressure switches. For flowing, corrosive and highly viscous media; designed for direct installation in pipes. Typical application areas:

Biochemical applications
 Food and luxury food industry
 Beverages industry
 Pharmaceutical industry

Technical Specifications

Process connection/tubus

Stainless steel 316 L
 clamp connection ISO 2852

diaphragm

Stainless steel 316 L, welded to body, no dead space

Instrument connection

Stainless steel 316 L
 Welded connection

Options

- Cooling element (> 100 °C)
- Capillary tube

pressure transmission liquid

Paraffin oil (FM 09), FDA-listed

pressure range

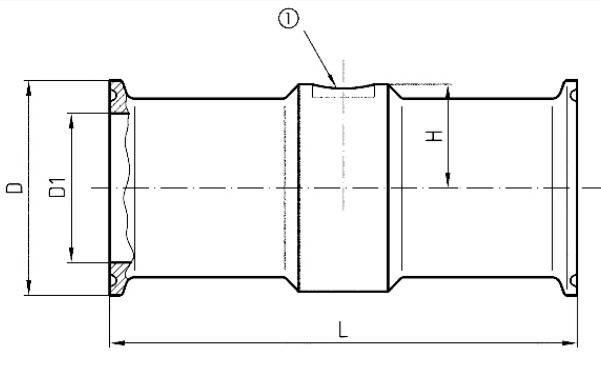
see overview of versions

Nominal pressure

PN 16

Technical Drawings

Type RD 60 Clamp ISO 2852



Welded connection \varnothing 10 for measuring instrument

DN	PN	D	D1	L	H
1"	16	50,5	22,2	110	24
1½"	16	50,5	34,8	110	31,5
2"	16	64	47,8	110	37
2½"	16	77,5	60,3	110	45
3"	10	91	72,9	60	51,5

Versions

Process connection	Nominal diameter	Instrument connection	Nominal pressure	minimum range* (in bar) at nominal size				Part no.
				63	100	160	DMU	
clamp connection ISO 2852	DN 2½"	Welded connection	PN 16	1.6 bar	2.5 bar	2.5 bar	1 bar	● 31380W

- in-stock items
- Non-stock items